

December Newsletter

Pegasus is winging it's way to Christmas

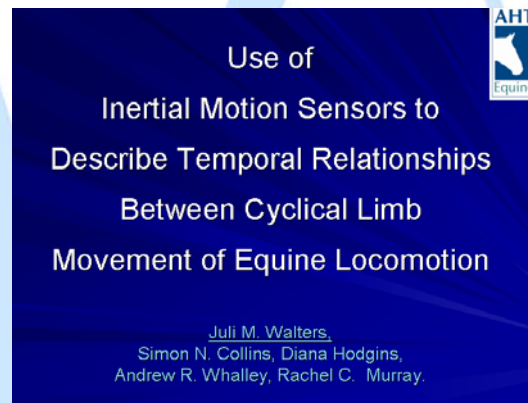
Hello everyone,

Well, Christmas is quickly closing in upon us and I thought it provided a lovely opportunity to say thank you for your support in this new venture, wish you all a lovely Christmas, Happy New Year and debut the first ETB-Pegasus newsletter!

Since I started with ETB-Pegasus in September we have been flying! Below are some of the highlights.

September

10-12th ETB-Pegasus exhibit at BEVA Conference and Juli Walters, from the Animal Health Trust gave a presentation on her work using the Limb Phasing system.



17th Equestrian Edge chose the Pegasus Limb Phasing system to support them in their gait analysis courses.



26-29th Juli Walters, from the Animal Health Trust gave a presentation on her work using the Limb Phasing system on dressage horses at ENUTRACO.

“A method of measuring the influence of rider interaction and training on the temporal relationships between limb cycles of horses using inertial motion sensors”.

J.M. Walters, S.N. Collins, D.M. Hodgins, A.R. Whalley and R.C. Murray

October

9th Moulton College use ETB-Pegasus Limb Phasing system in MSc research project at Parklands Stud regarding the effects of girth tension on stride characteristics.

15th ETB-Pegasus presented the Limb Phasing system at the ESMA CPD Day at Peasebrook Equine Clinic.



23rd Guest lecture at Moulton College

28th ETB-Pegasus went to Patchetts Equestrian Centre with Anna Ross-Davies.

November

11th The first winner of the Chiltern and Thames Rider competition had her ETB-Pegasus Limb Phasing profile.

11-13th ETB-Pegasus went to Sweden for trials on trotters and Icelandic horses with Lars Roepstorff.



Icelandic pony ready for test



Trotter tested in action

17th ETB-Pegasus attended BSJA training event with Equestrian Edge at Towerlands Park.

18th November ETB-Pegasus attended BHS UKCC Conference with Equestrian Edge at Heart of England Conference and Events Centre.

19th ETB-Pegasus invited to give a demonstration to Norfolk Equine Veterinary Services.

22nd ETB-Pegasus attended the BRC National Forum at Hartpury Equine College.

27th Guest lecture at Nottingham Trent University.

December

1st The second winner of the Chiltern and Thames Rider competition winner receive their ETB-Pegasus Limb Phasing profile.

7th ETB-Pegasus visit Matt Frost of AM Dressage and Huntley School of Equitation.

8th ETB-Pegasus went to Moulton College with Beverley Brightman to demonstrate the use of the Limb Phasing system with the dressage academy horses.

9th The third winner of the Chiltern and Thames Rider competition winner receive their ETB-Pegasus Limb Phasing profile.

10th Sparsholt College purchase the Pegasus Limb Phasing system to support their students learning and research.

11-13th ETB-Pegasus exhibited at Hartpury Show Jumping Spectacular and did the first profile of Sue Box's two endurance horses, which we will be following for the next year. **ALSO CONGRATULATIONS TO SUE ON BEING BEEN SELECTED FOR THE BRITISH TEAM SQUAD FOR 2010!**



Sue Box and Shadow

And to finish our first newsletter on a high -

**ETB-PEGASUS ARE PROUD TO ANNOUNCE WE WILL
BE SPONSORING ANNA ROSS-DAVIES IN 2010!**



Anna and Liebling at the European Championships 2007

www.etb-pegasus.org